



Templating Guide – Summary

Tools required:

Pencil (propelling pencil is better for a consistent line)
Bank card (any card of this shape)
Washer – Something similar in size to the outer ring of a £2 coin
Grade 1000 lining paper
Tape measure
Straight edge
Scissors
High tack masking tape

1 – Hoover the entire footprint to ensure no stones or debris impact the template underneath the lining paper.

2 – Fully line the footprint with the lining paper. Roll out the paper with the natural bend facing up to make this easier for yourself. You may need to pin down large sections with small amount of masking tape.

Tape all paper joints together where they meet to create full pieces (See pictures in Comprehensive guide)

3 – Pencil around the perimeter using the washer. Please ensure you keep the pencil nib always at the closest point to the edge you're drawing around. Be sure to cut out the shape from the pencil lines prior to sending so we have the exact template.

4 – Consider intersections. Being able to take up sections of your carpet is a huge benefit when out on travels. For example, taking up the entrance - way after a muddy walk so you don't get the carpets dirty. See photo in Comprehensive guide showing carpet in sections.

5 – Once happy with your sections, before cutting please draw arrows leading to the habitation door, so we know how everything lines up (see picture in comprehensive guide). Make cuts to sectionalise. **Ensure template is the exact shape you want your carpets to be!**

6 – Now you have your sections and templates created, tape up the underside of the templates where you've taped above to add strength so they hold up better in transit. Feel free to send us pictures of everything in situ if you require a second pair of eyes before sending.

7 – Carefully roll up and package, ideally in a postal tube. Post to address below:

52 Manvers Road
Mexborough
S Yorkshire
S64 9EX

Please feel free to continue to our comprehensive guide going into further detail on our templating process.

Ultimately, the more time and care spent on the template will result in a better fit.

We will create your carpets exactly from the shape of the templates sent!!

Full Comprehensive Guide



Here is a fully comprehensive guide on how we produce our vehicle templates.

Tools required:

Pencil (propelling pencil is better for a consistent line)

Bank card (any card of this shape)

Washer (used to run pencil around perimeter) – We actually use the outer ring of a £2 coin.

Grade 1000 lining paper

Tape measure

Straight edge

Scissors

High tack masking tape

1 – Hoover and clean the entire footprint of the vehicle. This is important as when you begin to pencil around the edge of the template debris and stones may impact the line you are on creating an unnatural edge.

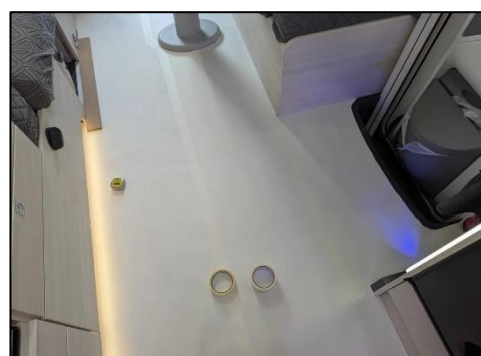
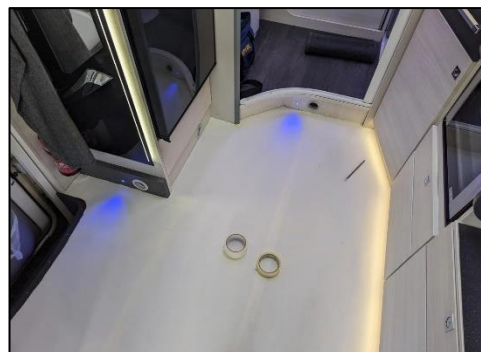
2 – Lining the vehicle with grade 1000 lining paper

This is what we use to template as we feel it is pliable, yet sturdy enough to create a tight fit with relative ease.

Start by rolling out the paper along the length of the main footprint, ensuring the natural bend of the paper is facing up as this will make it easier for you to template without fighting the paper. Coverage is important so this is why we roll out over the longest length.

Use your bank card to lightly crease the paper into the edges and cut the paper where necessary to create a tight fit.

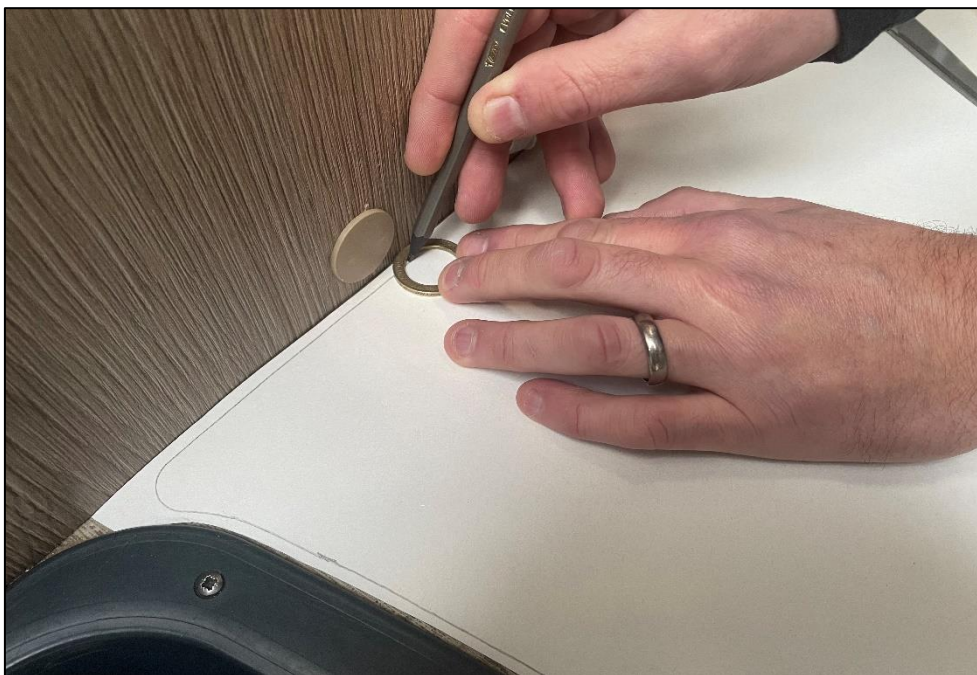
Repeat this process across the entire footprint, taping together the paper where necessary as shown in the pictures below. Don't forget to template any steps / habitation door mat as these are included in your set! (please add "this side up" to steps, mats & footprint)



3 – Pencil around the perimeter

Time and patience are key. Always keep your washer flush to the edge and flat to the floor with the nib of the pencil at the closest point of the washer to the edge. This will ensure a true outline, leaving enough tolerance for the edging of the carpet to fit nicely. The circular shape of the washer will allow you to continuously draw a perimeter line and round off internal and external corners. **Be sure to cut this shape out before sending so we have the true template!**

Don't worry too much about acute external corners as we will amend these accordingly once we receive the templates to the capabilities of the carpet edging machine.

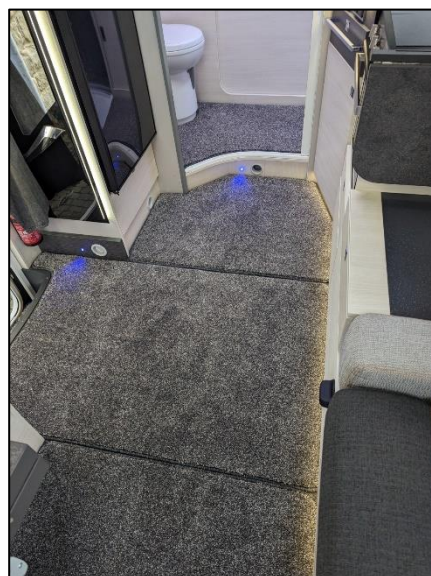


4 – Consider intersections

Toilet area split in sections, entrance-way section, table section etc.

Carpets in sections on leisure vehicles offer many benefits. For example, being able to take up your entrance-way carpet after a muddy walk. Easy to put away and take out without having to roll up one large piece.

Please see the carpet in sections on the below pictures to give an idea of how and where to split.

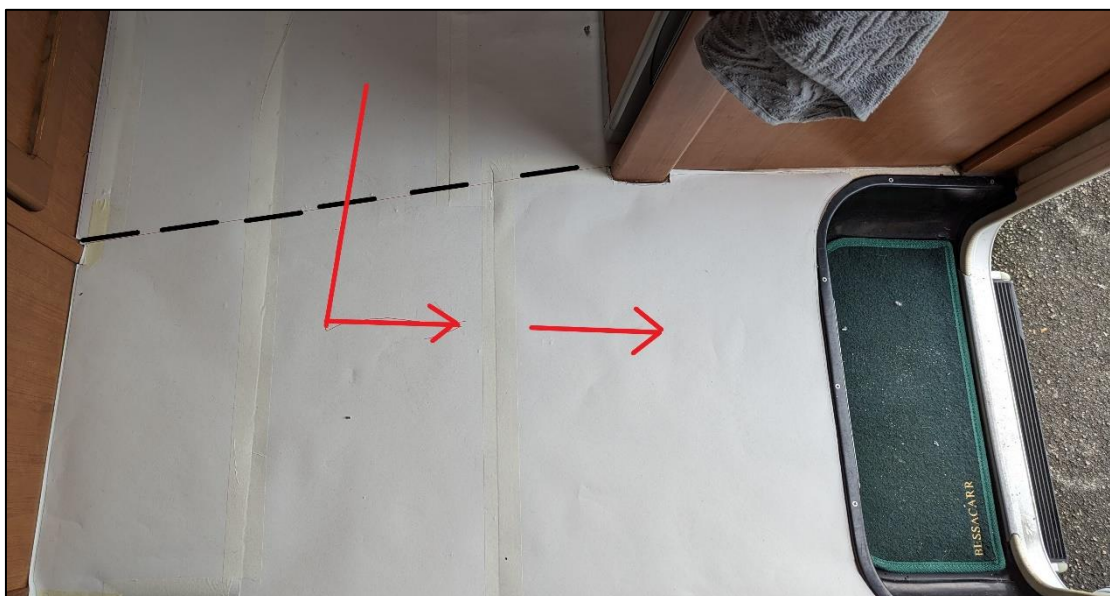


5 – Cut the intersections

Before cutting, please draw arrows leading to the habitation door, so we know how everything lines up (Picture below)

Create a definite and straight line using a pencil and a straight edge, then cut as neatly as possible. Don't worry too much about the corners as we can round them accordingly upon receipt. Cutting the intersections prior to sending will make it easier to post.

Warning: Don't use a Stanley blade to cut paper against any part of your vehicle. Scissors are always recommended.



6 – Tape the underside of the lining paper

Simply tape up the areas on the underside that have already been taped above. This will add strength to the template so it doesn't come apart in transit.

7 – Post to us

Ideally rolling up the templates and tubed to send will mean the template will arrive in a more solid state. Sometimes folds can distort the template. Please find address on the Summary page.

Any further questions, don't hesitate to contact us at sales@leisurecarpetsdirect.co.uk